

HORIZONTAL, AXIALLY SPLIT, ONE STAGE, DOUBLE SUCTION IMPELLER, BETWEEN BEARINGS PUMP

API-610

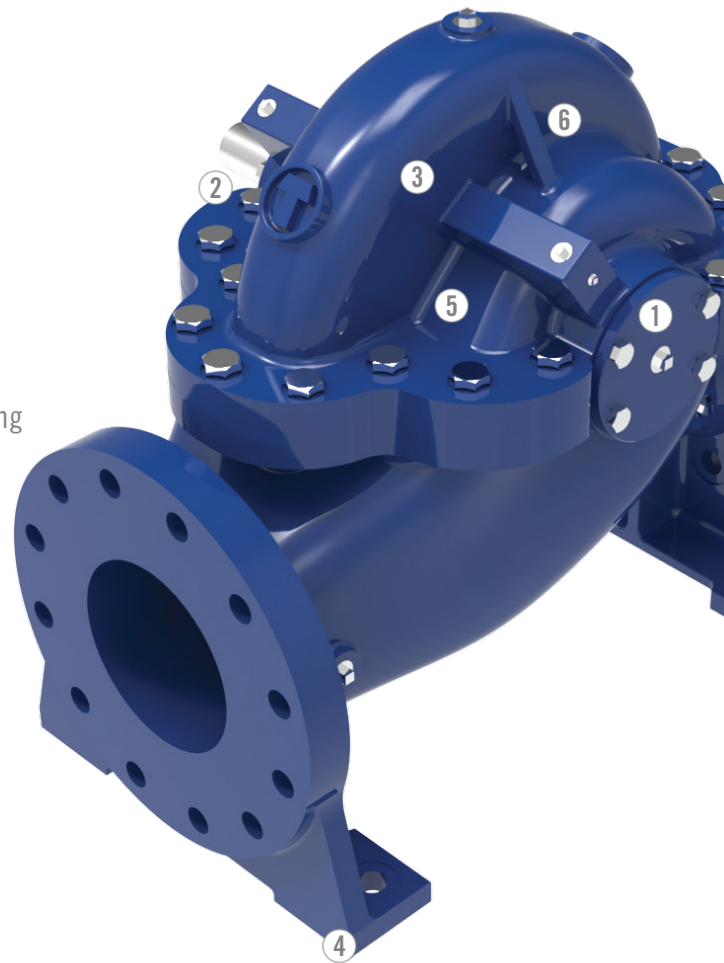
TYPE: BB1-IND

TRILLIUM PUMP MODEL: HSS

OVERVIEW

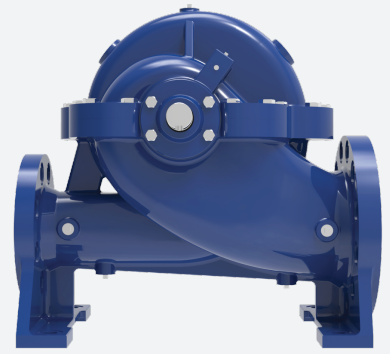
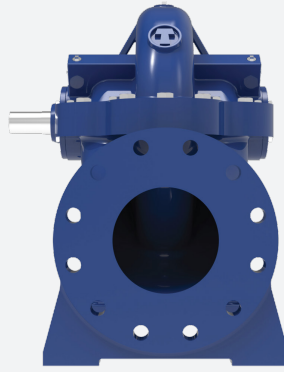
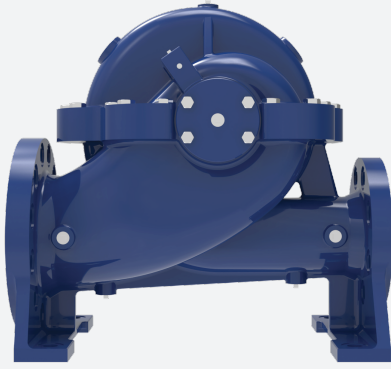
Trillium Flow Technologies' HSS pump range combines the engineering excellence, innovation, and heritage of our Gabbioneta Pumps® and Termomeccanica Pompe brands. Our expertise in designing and manufacturing BB1 style industrial pumps dates back to the 1960s, with thousands of units installed worldwide.

This BB1 style pump range is designed for the industrial and power markets and its core advantage is being fully self-contained using product lubricated bearings which avoid the cost and maintenance of bearing housings and requires only one mechanical seal or packing assembly.



KEY FEATURES

- ① Product lubricated bearing arrangement
- ② Single seal chamber reducing cost and maintenance
- ③ Double suction impeller
- ④ Foot mounted case configuration
- ⑤ Disc type wear rings to manage axial thrust
- ⑥ Bespoke high efficiency hydraulics



OPTIONS

- Available in range of materials to suit all industrial applications
- Instrumentation available on request
- Vertical configuration available for select applications
- High efficiency options with industry leading hydraulics

MAIN APPLICATIONS

- Water Transportation, Supply & Distribution
- Sea Water Desalination
- Booster Applications

OPERATING RANGE

- Capacity: up to 4,000 m³/hr, 18,000 USGPM
- Head: up to 200 m, 650 ft
- Temperature: up to 150°C, 300°F
- Speed of rotation: Up to 4,000 RPM

